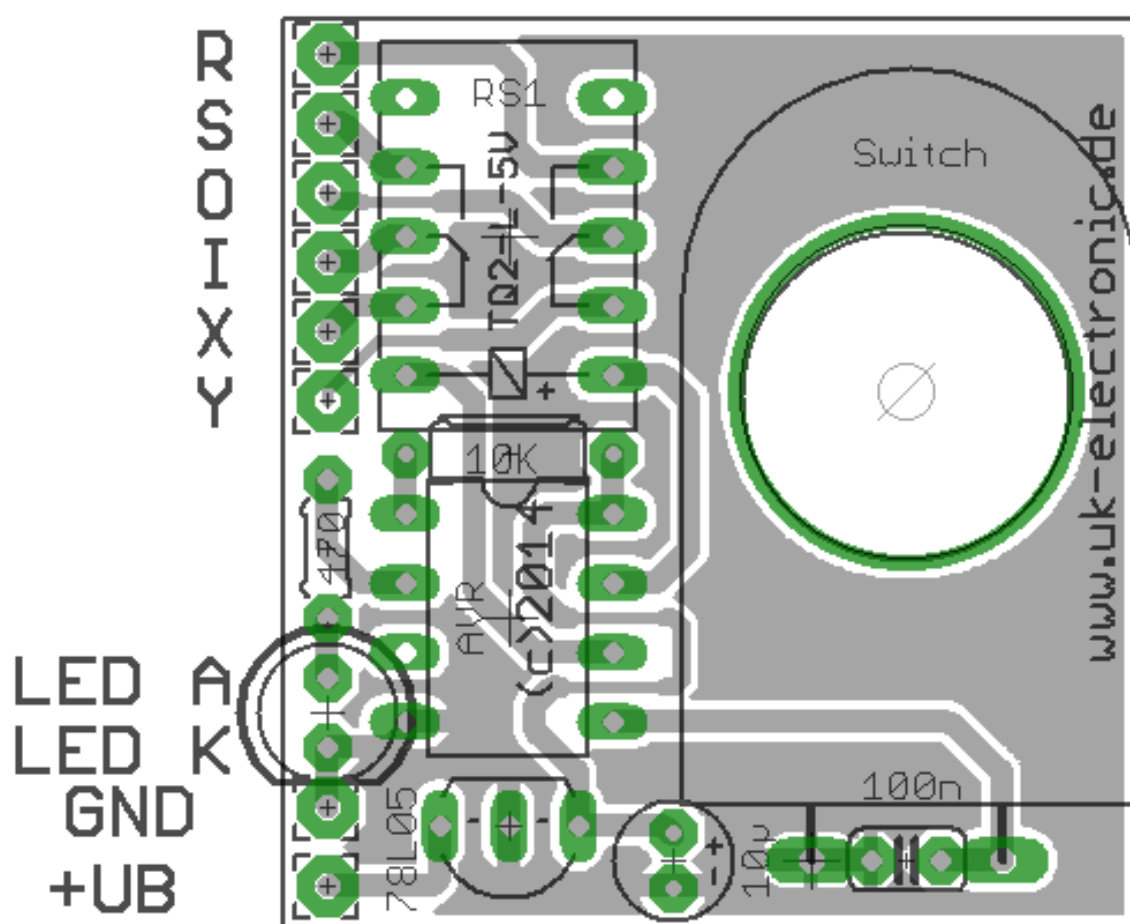


## Manual AVR powered Relay Bypass

Page 2.....	Bill of material
Page 3.....	Soldering the pcb
Page 4..5.....	External wirings/ schematic

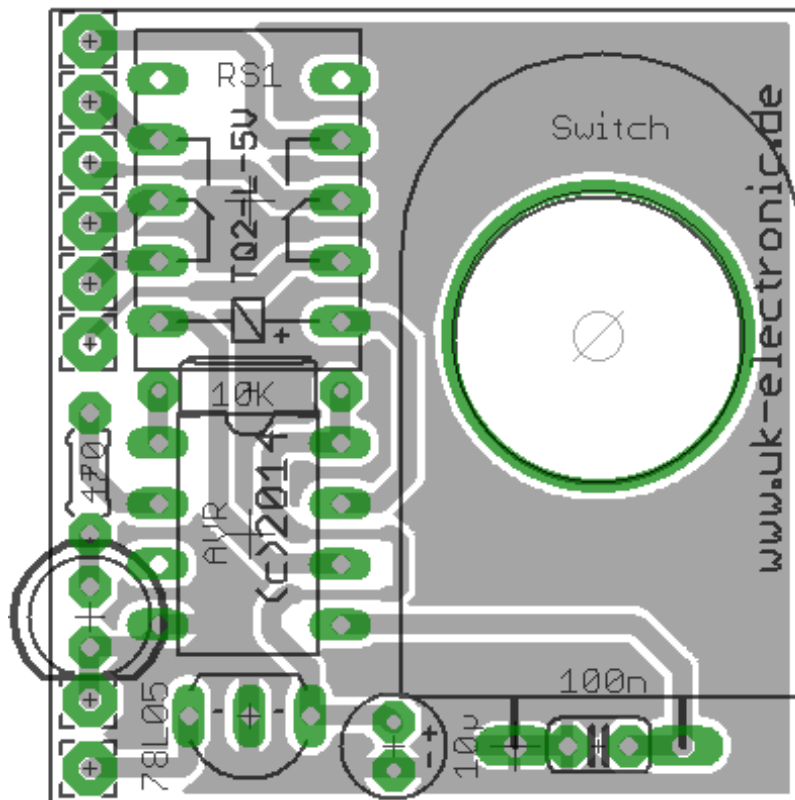


## Bill of material

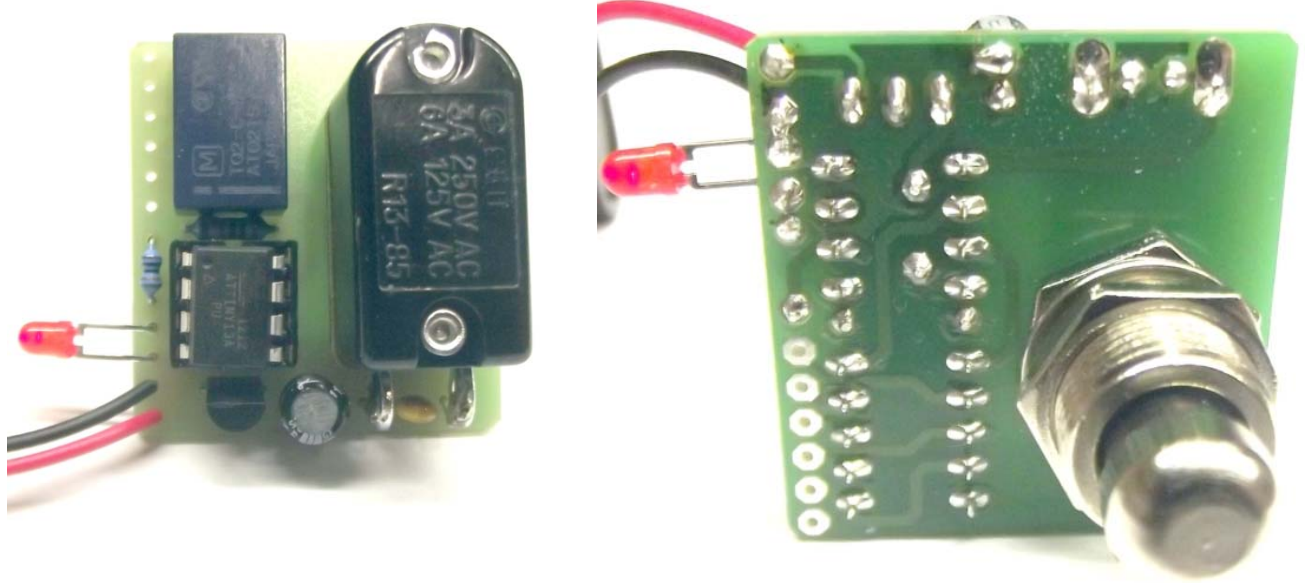
Quantity	Description
1	PCB „AVR-RS TA“
1	SPST momentary switch
1	Relay TQ2-L 5V
1	78L05 voltage regulator
1	Preprogrammed ATTINY13
1	Socket 8-pole
1	Some colored wirae
1	Resistor 470R (yellow/violet/black/black/brown)
1	Resistor 10K (brown/black/black/red/brown)
1	Multilayer ceramic cap 100nF/63V
1	Elektrolytic cap 10μF/25V oder 35V

## Soldering PCB

First, the circuit board is soldered based on the layout plan shown below. For this we should start with the lowest components to be fitted, ie first of all the resistors, capacitors and the socket and relay. The last is soldered to the switch with a few short wire ends. Any pulldown resistors on effects should be strictly maintained. The new AVR's are programmed so that the final state is stored in the chip. Thus, it may happen that the first switch on the power supply, the position effect = On is enabled.

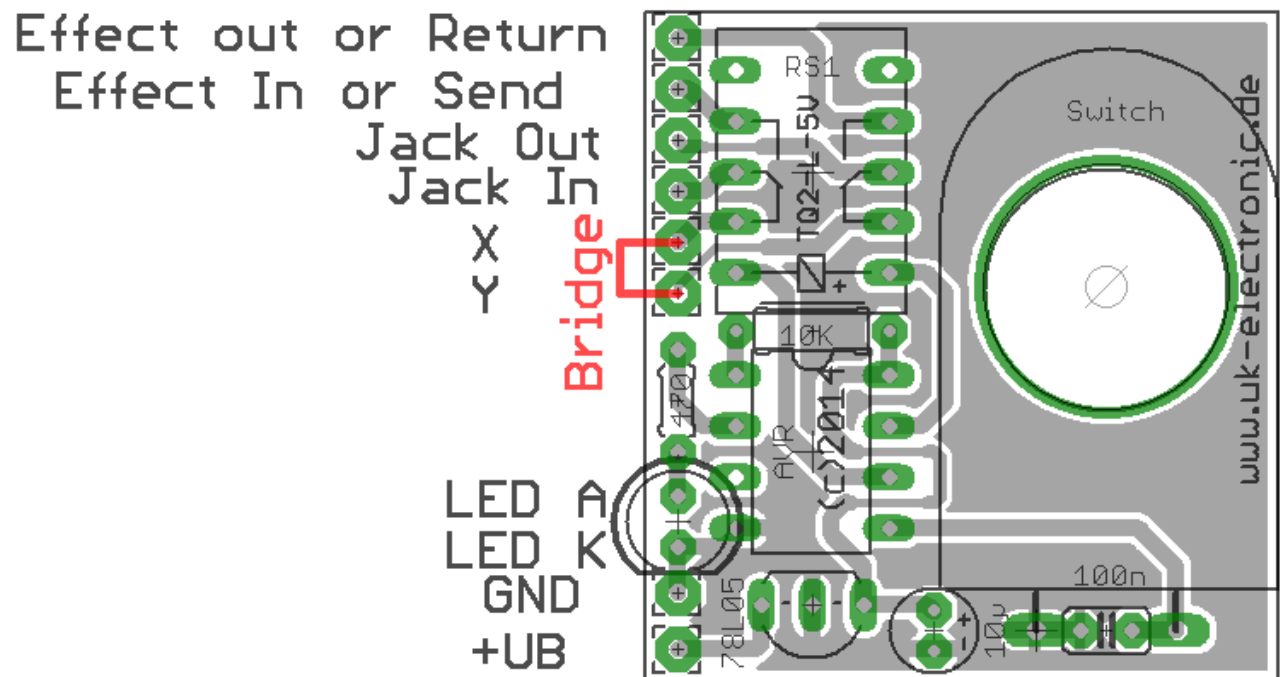


Soldered Top/ Bottom

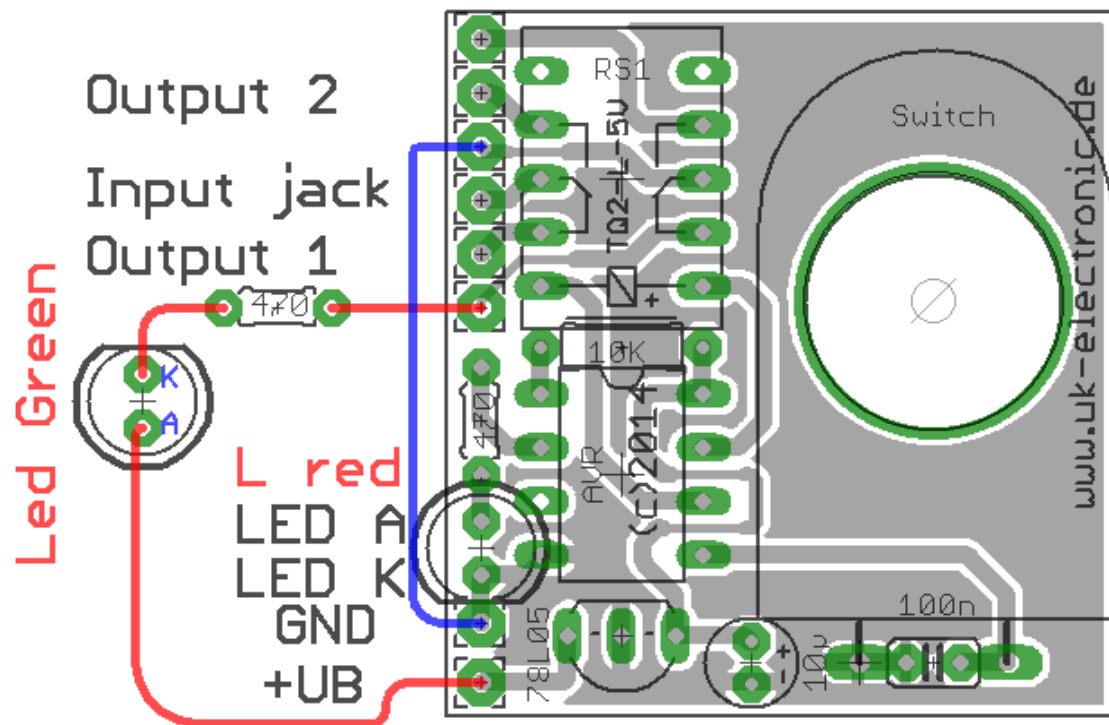


## Application and wirings

Wiring for normal effects or use as a true bypass box



## Wiring as a A/B Box



## Schematic

